

CitectSCADA V6.0

The next generation in visualization

CitectSCADA is a fully integrated HMI/SCADA solution that enables customers to increase return on assets by delivering a highly scalable, reliable control and monitoring system. Easy-to-use configuration tools and powerful features enable you to quickly develop and deploy solutions for any size application.

CitectSCADA V6.0 has a number of major new exciting features, including: an innovative tool for analyzing alarms and trends; zero-maintenance Web Client; support for true color; hundreds of new symbols; longer tag names; time-stamped data and custom alarm filters.

POWERFUL VISUALIZATION

CitectSCADA V6.0 includes a powerful Process Analyst, which enables operators and engineers to analyze the cause of process disturbances by combining trends and alarms in one integrated display. There are also over 500 new true color graphic symbols that will allow you to quickly develop, easy-to-use graphics that provide the operator with an intuitive, consistent user interface.

ENTERPRISE ACCESS

A new Web Client is available with CitectSCADA V6.0. This is a zero-maintenance, fully functional client that is viewed using Internet Explorer. This new client allows all users throughout an enterprise to take advantage of real-time information by providing easy access to the SCADA system.

WHAT'S NEW IN V6.0?

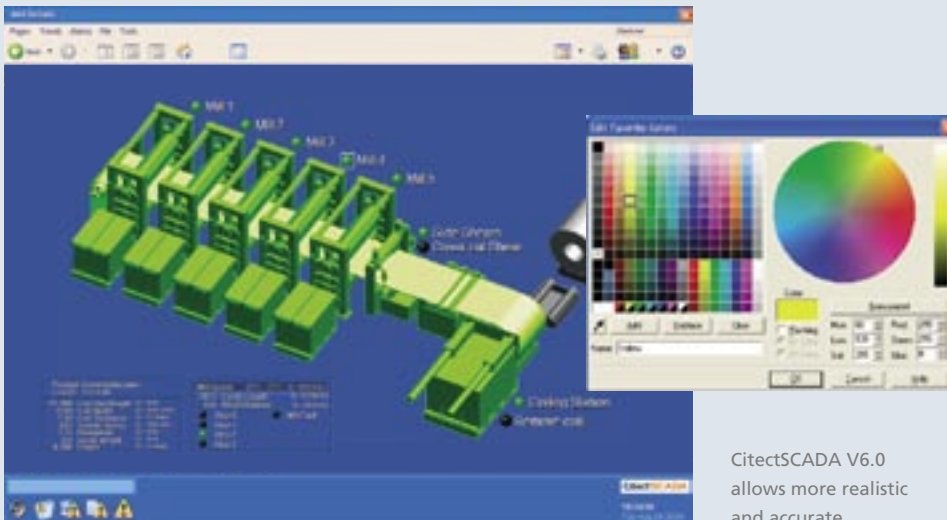
- Process Analyst
- Web Client
- True Color
- Hundreds of new True Color Symbols
- Custom Alarm Filters
- Longer Tag Names
- Enhanced Time-Stamped Alarms
- Enhanced Event Trending

GOLD MEMBERSHIP

Citect Gold Membership gives you access to the latest Citect technology and expertise wherever and whenever you need it. It ensures that you receive the maximum return from your automation investment by helping you benefit from the latest Citect innovations.

For a free upgrade to CitectSCADA V6.0, join Citect Support Gold Membership today!

www.citect.com/support/membership



CitectSCADA V6.0 allows more realistic and accurate representation of your plant and its status.



TechnicalSheet

www.citect.com

CitectSCADA

Scalable >>> Flexible >>> Reliable

CITECTSCADA OPTIONS

Citect Plant2Business

An easy-to-use reporting tool that seamlessly connects, transfers and publishes data from multiple disparate systems throughout the plant, allowing process and maintenance engineers to improve production reporting.

CitectSCADA Batch

Delivers a highly flexible, scalable, S88 based batch management solution to increase productivity and achieve consistent high quality. Providing unrivalled reliability, this easy-to-use offering integrates tightly with existing systems and facilitates compliance with FDA 21 CFR Part 11.

CitectSCADA Pocket

Provides an operator interface for the remote monitoring and control of your plant anytime, anywhere. Tightly integrated with CitectSCADA, this easy-to-use offering enables operators to change set-points and outputs as well as acknowledging alarms.

CitectSCADA FastLinX

Unifying CitectSCADA and PLC tag configuration into a single common database reduces implementation time, system maintenance costs and eliminates configuration errors.

CitectSCADA Time Scheduler

An integrated tool which automatically controls equipment based on calendar events.

PROCESS ANALYST

Process Analyst is the next generation in historical visualization tools. It allows operators and process engineers to analyze the cause of process disturbances by bringing together trend and alarm data, which traditionally is stored separately. With the Process Analyst, users can simply view them all on a single integrated display.

Complete flexibility is provided to the user on how the pens can be displayed, for example they can be overlaid or stacked and any pen can be placed in different panes to reduce clutter and make the display easier to read.

The Process Analyst includes many unique features including true Daylight Savings Time support, accuracy to millisecond resolution, individual time axis per pen, customizable toolbars, rich printing and saving of all display settings for easy recall.

EASY-TO-USE

The Process Analyst's capability to display such rich information requires it to have an easy-to-use, yet powerful navigation system. Every pen added to the Process Analyst has a number of properties including:

- Pen Color and Name
- Tag properties such as Engineering Units, Scales, etc.
- Cursor Values (multiple cursors are available)
- Data average/minimum/maximum

The information available is customizable, allowing you to add or remove any of the standard column types (e.g. Engineering Units), and also add custom columns.

EXAMPLES OF USE

Root Cause Analysis

When a process upset or disturbance occurs it is always time consuming to have to find the root cause. In the past the process engineer had to compare trend data from the screen with alarm logs. With Process Analyst, all the engineer has to do is simply add any pen (analog, digital, alarm) that could have contributed to the process upset to the display. Each process change can then easily be compared as alarms occur, enabling sophisticated analysis of the process upset.

Compare Different Batches

With Process Analyst it is easy to compare different batches in a single integrated view. Simply place all the variable tags, alarms and state changes for a batch unit on one pane, and the same set on a separate pane. Then the operator simply has to scroll one of the panes through time. Any differences in the batch execution will immediately be visible.

Sequence of Events

With SCADA systems, the data is distributed around a wide area and typically the RTUs collect the data at millisecond resolution and send it to CitectSCADA every time it is polled. The Process Analyst displays historical alarms and trends to millisecond accuracy, making it easy to determine the sequence of events.



Process Analyst, Single Integrated Alarm and Trend Display

For further information visit www.citect.com

AMERICAS HQ +1 770 521 7511
AUSTRALIA / ASIA HQ +61 2 9496 7300
EUROPE HQ +31 71 576 1550
CHINA +86 21 6886 3799
GERMANY +49 81 61 872916
SOUTH AFRICA +27 11 699 6600
UK +44 1675 466658

Copyright © 2004 Citect Pty Ltd.
All rights reserved. Citect, CitectSCADA, Citect Plant2Business and CitectILM are registered trademarks of Citect Pty Ltd. All other brands or names are property of their respective holders. PR10495

Citect
Industrial Strength Solutions