

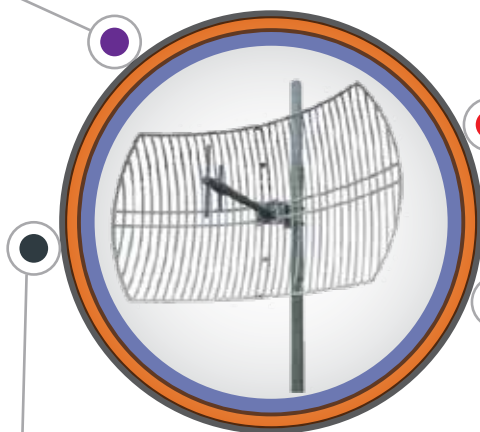


PARABOLIC GRID ANTENNA

820 ~ 2180 MHz (13/16/18dBi)

Grid antenna is a variation of the parabolic/dish antenna. The disadvantage of a dish antenna is that heavy/moderate wind conditions, moves it out of alignment or deforms. It is because it has a large solid surface which is usually perpendicular to the wind flow.

The reflector of the grid antenna is perforated into a grid and does not block heavy wind, as the wind easily passes through the grill.



FEATURES

- Perfect performance
- Die cast aluminium reflector grid for superior strength
- Folding structure, easy transport and store
- Low wind loading
- Vertical or horizontal polarization mounting
- All weather operation

CONTACT

 32 Kersieboom Crescent
Zwartkop, Centurion
South Africa

 www.linkworld.co.za

 sales@linkworld.co.za

 +27 12 663 5515

APPLICATIONS

- Point to Point/Point to Multi-point Systems
- Long-Range Directional Applications
- Wireless Bridges, Backhaul Applications & Wireless Video Systems

SSE
Specialist System Engineering (Pty) Ltd
INNOVATION PIONEERS

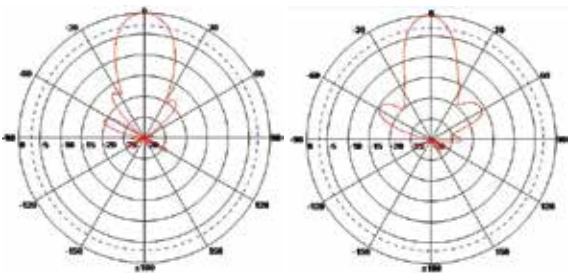
www.linkworld.co.za

SPECIFICATIONS

Electrical Specifications					
Model	GRID-8996-1835	GRID-900-1800		GRID-900-2100	
Frequency Range	820 ~ 960 MHz	890 ~ 960 MHz	1710 ~ 1880 MHz	890 ~ 960 MHz	1920 ~ 2180 MHz
Bandwidth	70 MHz	~	~	~	~
VSWR	≤ 1.5	< 1.5 : 1	< 1.5 : 1	< 1.5 : 1	< 1.5 : 1
Gain	18 dBi	13dB	16dB	13dB	16dB
F/B Ratio	≥30	>30		>30	
Horizontal Beamwidth	16.5°	9.5°		9.5°	
Vertical Beamwidth	17°	13°		13°	
Input Impedance	50Ω	50Ω		50Ω	
Polarization	Vertical	Vertical or Horizontal		Vertical or Horizontal	
Max. Power	100W	100W		100W	
Mechanical Specifications					
Connector	N-Female / custom	N-Female		N-Female	
Diameter / Dimensions	∅ 1.2	400 x 600mm		400 x 600 mm	
Weight	7.1 kg	7.1 kg		7.1 kg	
Mast Diameter	∅50 ~ ∅70	∅30 ~ ∅50		∅30 ~ ∅50	

RADIATION PATTERNS

GRID-900-1800 / GRID-900-2100



GRID-900-1800 / GRID-900-2100

